

(19) World Intellectual Property Organization  
International Bureau



(43) International Publication Date  
8 August 2002 (08.08.2002)

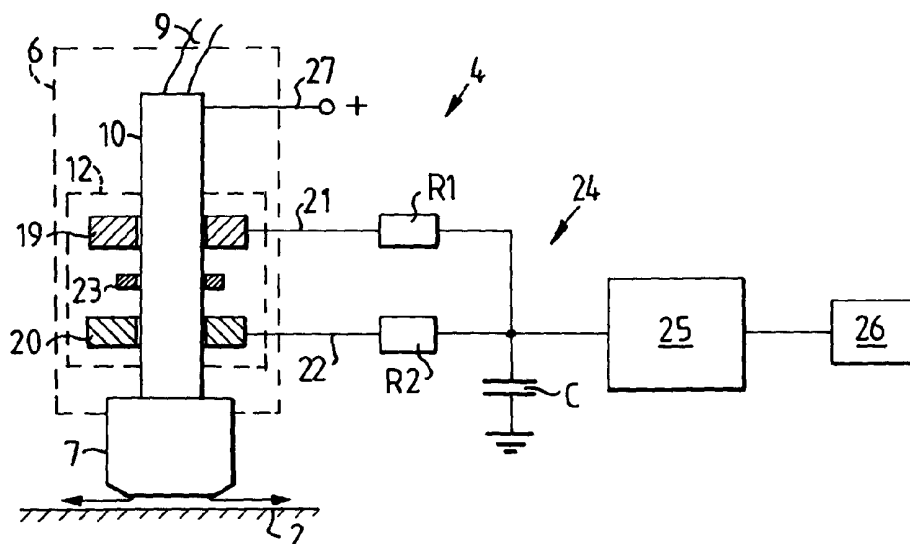
PCT

(10) International Publication Number  
WO 02/061369 A1

- (51) International Patent Classification<sup>7</sup>: G01B 13/00, 13/06
- (74) Agents: ALBIHNS STOCKHOLMN AB et al.; P.O.Box 5581, Linnégatan 2, S-114 85 Stockholm (SE).
- (21) International Application Number: PCT/SE02/00108
- (81) Designated States (*national*): AE, AG, AL, AM, AT, AU, AZ, BA, BB, BG, BR, BY, BZ, CA, CH, CN, CO, CR, CU, CZ, DE, DK, DM, DZ, EC, EE, ES, FI, GB, GD, GE, GH, GM, HR, HU, ID, IL, IN, IS, JP, KE, KG, KP, KR, KZ, LC, LK, LR, LS, LT, LU, LV, MA, MD, MG, MK, MN, MW, MX, MZ, NO, NZ, OM, PH, PL, PT, RO, RU, SD, SE, SG, SI, SK, SL, TJ, TM, TN, TR, TT, TZ, UA, UG, US, UZ, VN, YU, ZA, ZM, ZW.
- (22) International Filing Date: 23 January 2002 (23.01.2002)
- (25) Filing Language: Swedish
- (26) Publication Language: English
- (30) Priority Data: 0100181-7 23 January 2001 (23.01.2001) SE
- (84) Designated States (*regional*): ARIPO patent (GH, GM, KE, LS, MW, MZ, SD, SL, SZ, TZ, UG, ZM, ZW), Eurasian patent (AM, AZ, BY, KG, KZ, MD, RU, TJ, TM), European patent (AT, BE, CH, CY, DE, DK, ES, FI, FR, GB, GR, IE, IT, LU, MC, NL, PT, SE, TR), OAPI patent (BF, BJ, CF, CG, CI, CM, GA, GN, GQ, GW, ML, MR, NE, SN, TD, TG).
- (71) Applicant (*for all designated States except US*): DAPROX AB [SE/SE]; P.O.Box 120, S-127 23 Skärholmen (SE).
- (72) Inventor; and
- (75) Inventor/Applicant (*for US only*): ÅKERBLOM, Bengt [SE/SE]; Vårby Allé 23, S-143 40 Vårby (SE).
- Published: — with international search report

[Continued on next page]

(54) Title: METHOD AND ARRANGEMENT FOR POSITIONING A SENSOR HEAD FOR MEASURING WHILE OBJECT IS MOVING



(57) Abstract: During measurement by means of a measurement arrangement (4) in which a sensor head (7) is axially movable in a sensor housing (6) and is intended, in the measurement position, to rest against a measured object (2) via an air cushion, the orientation of the sensor head in the sensor housing is monitored. When the orientation of the sensor housing deviates by a predetermined value from the normal, the measurement arrangement is temporarily moved a distance away from the measured object and is then returned to the measurement position again for continued measurement, with the sensor head now in the normal position relative to the sensor housing. In such a measurement arrangement, a monitoring device (24) is provided to automatically produce the stated movement of the measurement arrangement.

WO 02/061369 A1



— *with amended claims*

*For two-letter codes and other abbreviations, refer to the "Guidance Notes on Codes and Abbreviations" appearing at the beginning of each regular issue of the PCT Gazette.*