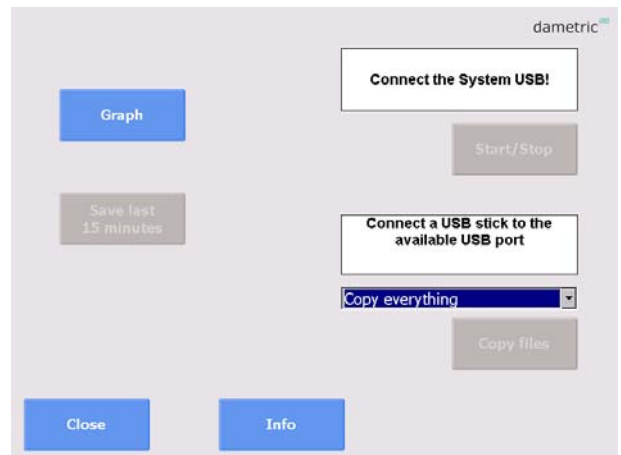
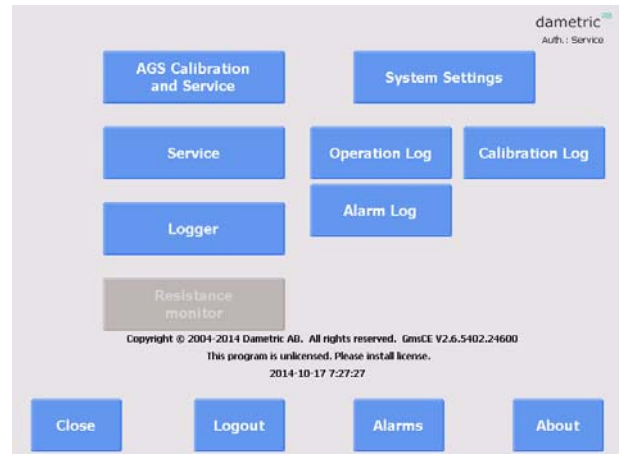




COPY FILES TO USER MEMORY

- Insert a USB-stick into the available USB-port.
- Press **MENU**, and then the **Logger** button.
- The **Copy files** button will be enabled (blue) then your USB-stick is attached.
- Select **Last month** in the drop-down list.
- Press the **Copy files** button. Wait until it is completed.
- Press **Close** all the way to the main display.
- Remove your USB-memory.
- Sent the created folder to Dametric for inspection.



All log files, calibration files and database file is copied to the memory and to the directory: <USB>\<LICENSE>_<REFINER_ID>\GMS\Backup\<DATE>\
For example: F:\Dametric_R1\GMS\Backup\2014-11-05_123456\...

Dametric AB

Jägerhorns Väg 19, SE-141 75 Kungens Kurva, Sweden
Phone: +46-8 556 477 00 Telefax: +46-8 556 477 29
E-mail: service@dametric.se www.dametric.se

