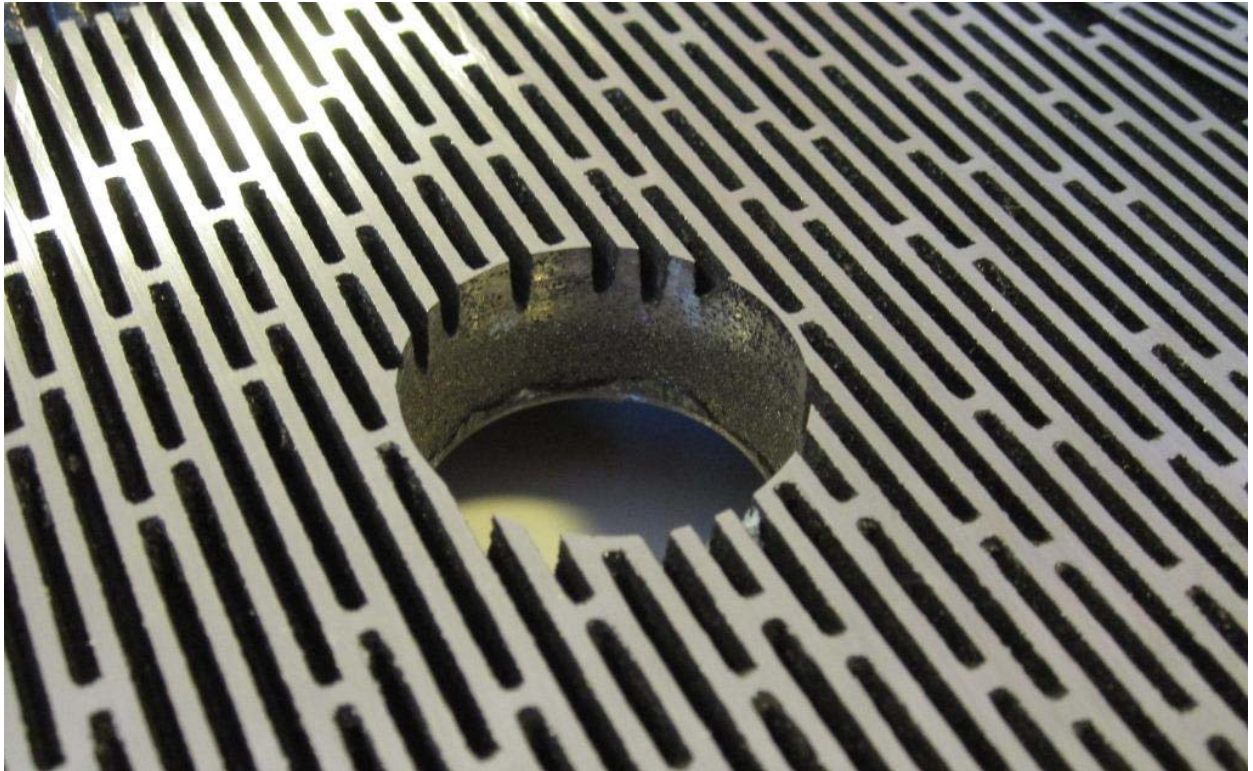


# AGS-XP Segment Hole



## DESCRIPTION

dametric 

CONTENT

1 GENERAL.....2

2 AGS-SB170, AGS-TW60.....2

3 AGS-SB170E.....3

4 AGS-XXXXS, TDC-XXX.....4

5 AGS-SP-S2KS-SK – “E” TO “S” CONVERTER.....5

6 CONTACT.....5

1. GENERAL

This manual will describe the outline of the segment hole depending on the AGS sensor type.

2. AGS-SB170, AGS-TW60

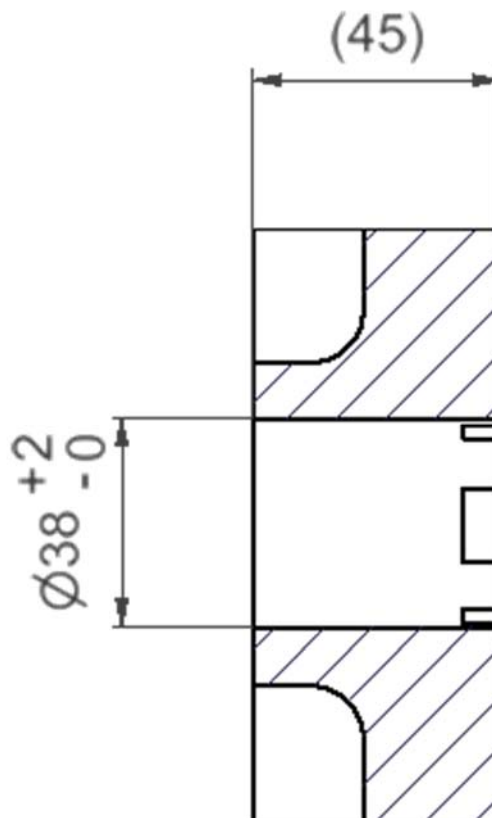
The AGS-SB170 is the first design. There is no support edge in the segment so the AGS is adjusted by the threads in the segment holder/stator.

The AGS-SB170 is using the AGX-XP-250 tip together with the holder AGS-SP-SB170-H. This type is used in Port Hawkesbury.

The AGS-TW60 is using the AGX-XP-450 tip together with the holders AGS-SP-TW60-H and AGS-SP-TW60FO. This type is used in Braviken today but is going to be changed.

A sealing sleeve is mounted to the AGS holder. No support edge!

The hole in the segment should have this design.



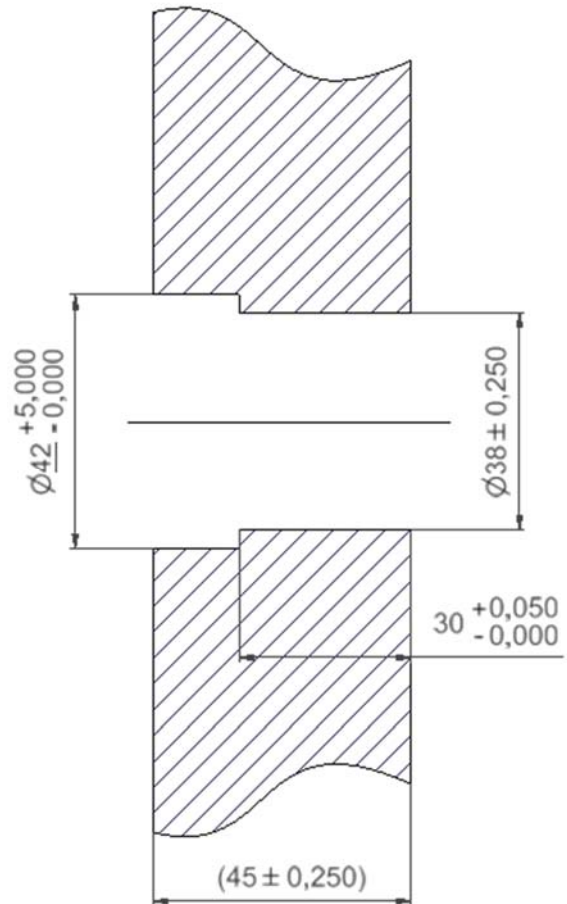
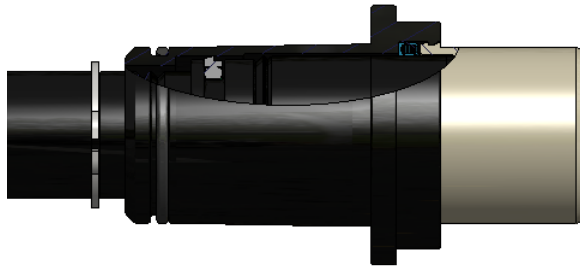
**3. AGS-SB170E**

The AGS-SB170E is designed to replace the AGS-SB170, and uses a support edge placed 30 mm from the segment surface. This feature is implemented to ease the installation and replacement of the tips.

The AGS-SB170E is using the AGX-XP-E250 tip together with the holder AGS-SP-SB170-HE. This AGS type is used in Hallstavik and Workington.

This tip type has a built in sealing and sealing surface.

The hole in the segment should have this design



#### 4. AGS-XXXXS, TDC-XXX

The AGS-XXXXS types uses the same segment hole as the standard TDC with a support edge 23 mm from the segment surface.

All TDC sensors uses this hole design.

This is a list of AGS sensors and AGS-tips which uses this segment hole design:

| <i>Refiner type</i>            | <i>AGS Sensor</i> | <i>AGS Tip</i> |
|--------------------------------|-------------------|----------------|
| RGP-2XX                        | AGS-200S          | AGS-XP-S360    |
| RGP-CF82 ConFlo, RF5 Optifiner | AGS-CFS           | AGS-XP-S270    |
| RGP-60                         | AGS-IZS           | AGS-XP-S430    |
| RGP-CD70, RGP-CD76X            | AGS-IZGS          | AGS-XP-S430    |
| RGP-CD76, RGP-CD82             | AGS-I76S          | AGS-XP-S460    |
| RGP-CD70                       | AGS-OZGS          | AGS-XP-S270    |
| RGP-CD76, RGP-CD76X, RGP-CD82  | AGS-O76S          | AGS-XP-S360    |
| Andritz HXD                    | AGS-HXDS          | AGS-XP-S460    |
| Andritz Twin-60                | AGS-TW60S         | AGS-XP-S460    |
| Andritz S2070                  | AGS-S2KS          | AGS-XP-S360    |

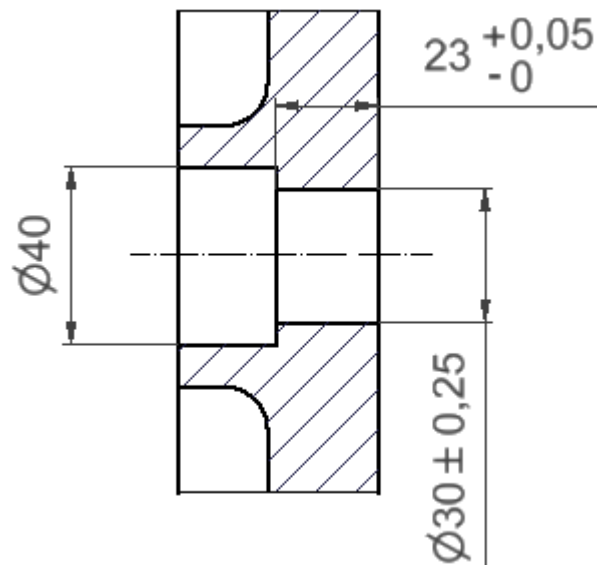
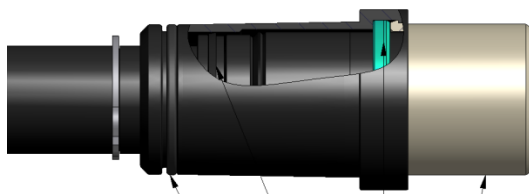
The AGS-HXDS sensor is used in Hallstavik.

The AGS-TW60S sensor is used in Hyltebruk.

The AGS-S2KS sensor is used in Estonian Cell.

This tip type has a built in sealing and sealing surface.

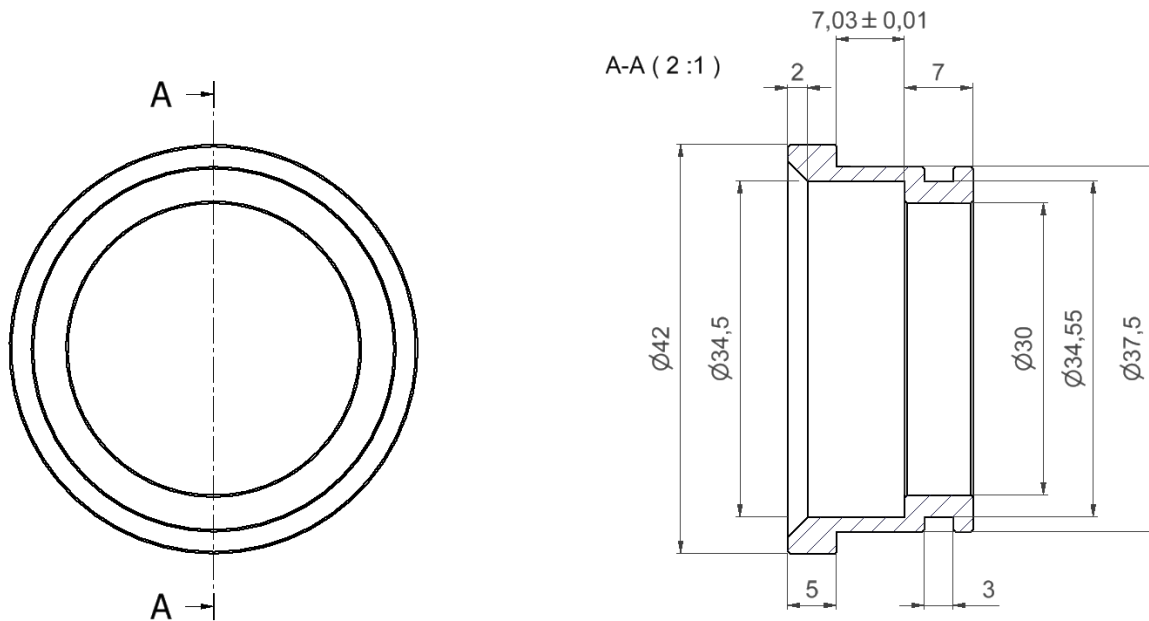
The hole in the segment should have this design



## 5. AGS-SP-S2KS-SK – “E” to “S” converter

The AGS-SP-S2KS-SK adapter is used to convert a “30 mm segment hole” to a “23mm segment hole”. That is to convert from a AGS-XP-Exxx sensor tip to the AGS-XP-Sxxx type.

The outline looks like this.



The intention is to use an adapter when for any reason a customer has received a segment with another hole-dimension. The dimension 7,03 have to be adjusted to get a 23 mm hole if the edge have another dimension than 30 mm.

## 6. CONTACT

Sales, development, production and service:

### Dametric AB

Jägerhorns Väg 19, 141 75 Kungens Kurva, Sweden

Phone: +46-8 556 477 00

Telefax: +46-8 556 477 29

e-mail: [ags@dametric.se](mailto:ags@dametric.se)

Web site: [www.dametric.se](http://www.dametric.se)

dametric 