

# AGS-XP-450

450 mm sensor tip  
for the AGS sensor



## DESCRIPTION

dametric 

# 450 MM SENSOR TIP FOR THE AGS SENSOR

## CONTENT

<b>1</b>	<b>GENERAL</b> .....	<b>2</b>
<b>2</b>	<b>SEALING</b> .....	<b>2</b>
<b>3</b>	<b>TIP EXCHANGE</b> .....	<b>3</b>
3.1	Preparation.....	3
3.2	Remove the old tip .....	3
3.3	Enter the id-number.....	3
3.4	Mount the new tip .....	3
3.5	Finish.....	3
<b>4</b>	<b>WEAR LIMIT INDICATOR</b> .....	<b>3</b>
<b>5</b>	<b>ID - NUMBER</b> .....	<b>4</b>
<b>6</b>	<b>PATENTS</b> .....	<b>4</b>
<b>7</b>	<b>METSO PAPER PART NO</b> .....	<b>4</b>
<b>8</b>	<b>OUTLINE DRAWING</b> .....	<b>4</b>
<b>9</b>	<b>CONTACTS</b> .....	<b>4</b>

## 1 GENERAL

The sensor tip part of the AGS sensor includes the actual gap measuring sensor. There are a couple of different tips with different lengths and the AGS-XP-450 is 450 mm long and will fit the AGS-TW60 and AGS-HXD sensors.

## 2 SEALING

This sensor tip includes several lubricated sealing gaskets which are protected by the sealing sleeve and a red plastic cover. The sleeve must never be removed while the red plastic must be removed during installation.



### 3 TIP EXCHANGE

The AGS sensor must remain connected during the tip exchange procedure. The plates should be well apart and the AGS mounted into the stator of the refiner. The sequence is controlled by the Panel-PC.

#### 3.1 Preparation

Check that the new tip is intact and don't remove the red sealing until it is necessary. The sealing sleeve (see picture above) should be placed about 20 mm from the tip edge (don't push it in further).

#### 3.2 Remove the old tip

- At the tip: Unthread the sealing sleeve until it is free from the holder in the stator. Don't remove it from the tip.
- At the Panel-PC: Run the "Tip replacement" procedure and follow the instructions. The tip will be pushed out about 20 mm from the AHS head.
- At the tip: Remove the tip by pulling it straight out by manpower (don't rotate!).

#### 3.3 Enter the id-number

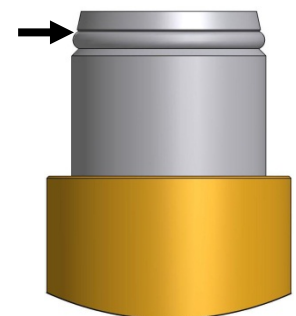
- At the Panel-PC: Enter the serial/tip id-number of the tip.

#### 3.4 Mount the new tip

- At the tip: Push in the new tip gently. When stopped, push gently and rotate the tip until the connector bayonet complies. Then the tip can be pushed in a couple of millimeters. The gap measurement will start after a couple of seconds and the alarm goes off.
- At the Panel-PC: Continue and the AGS will draw in the tip to the home position (APO = 0.00). Continue with the coarse calibration and procedure is completed.

#### 3.5 Finish

- At the tip: Thread the sealing sleeve into the holder in the stator. Use a maximum torque of 20Nm with at 34 mm wrench until the copper washer seals between the sleeve and the holder.
- Adjust the AGS holder until the tip is aligned with the stator plates.



### 4 WEAR LIMIT INDICATOR

It is important that the sensor is not worn beyond the indicator, marked by the arrow. Note that this is after the estimated plate life. A sensor worn beyond this point may result in a plate crash and furthermore affect the refiner security.

## 5 ID - NUMBER

The Tip Id number includes 13 digits and is given to the system when a new sensor tip is mounted.

The first four digits in the number are the serial number of the tip and the remaining digits is a coded number which also includes a coded date of time.

The tip id number is also printed on a label which is tabbed on the document following the tip.

Enter the code when prompted during the tip exchange procedure. If the code is not valid, the tip can still be used but only for a time period of five days.

If the code is ok, but it is out of date (more than one year after the manufacturing date), the tip can be used for 20 days without limitations.

During this time the user must require a valid code and then validate the tip by the Panel-PC program.

A not validated tip will still work even if the validation time has passed but with the following limitations:

- A recalibration of the tip can not be done.
- The trend display cannot be enabled.
- The system settings functions are disabled.

Consult Dametric on 'tipid@dametric.se' (or call +46-8 556 477 00) to get a new tip id if the time limit has expired for tips that has been in stock before use more than a year.

## 6 PATENTS

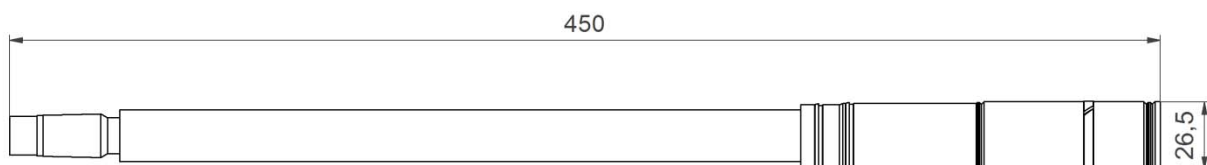
The AGS sensor and the measuring tips are protected by patents no.:

US 6.657.427, US 7.064.536, WO2004/085070, WO2005/083408 and WO/2006/135331.

## 7 METSO PAPER PART NO

VAL0329365.

## 8 OUTLINE DRAWING



## 9 CONTACTS

Development, production and service:

### Dametric AB

Jägerhorns Väg 19, SE-141 75 Kungens Kurva, Sweden

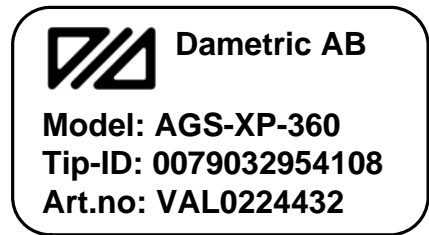
Phone: +46-8 556 477 00

Telefax: +46-8 556 477 29

e-mail: [dametric@dametric.se](mailto:dametric@dametric.se)

[www.dametric.se](http://www.dametric.se)

dametric 



Tip-ID: 0079032954108  
 serial → code →