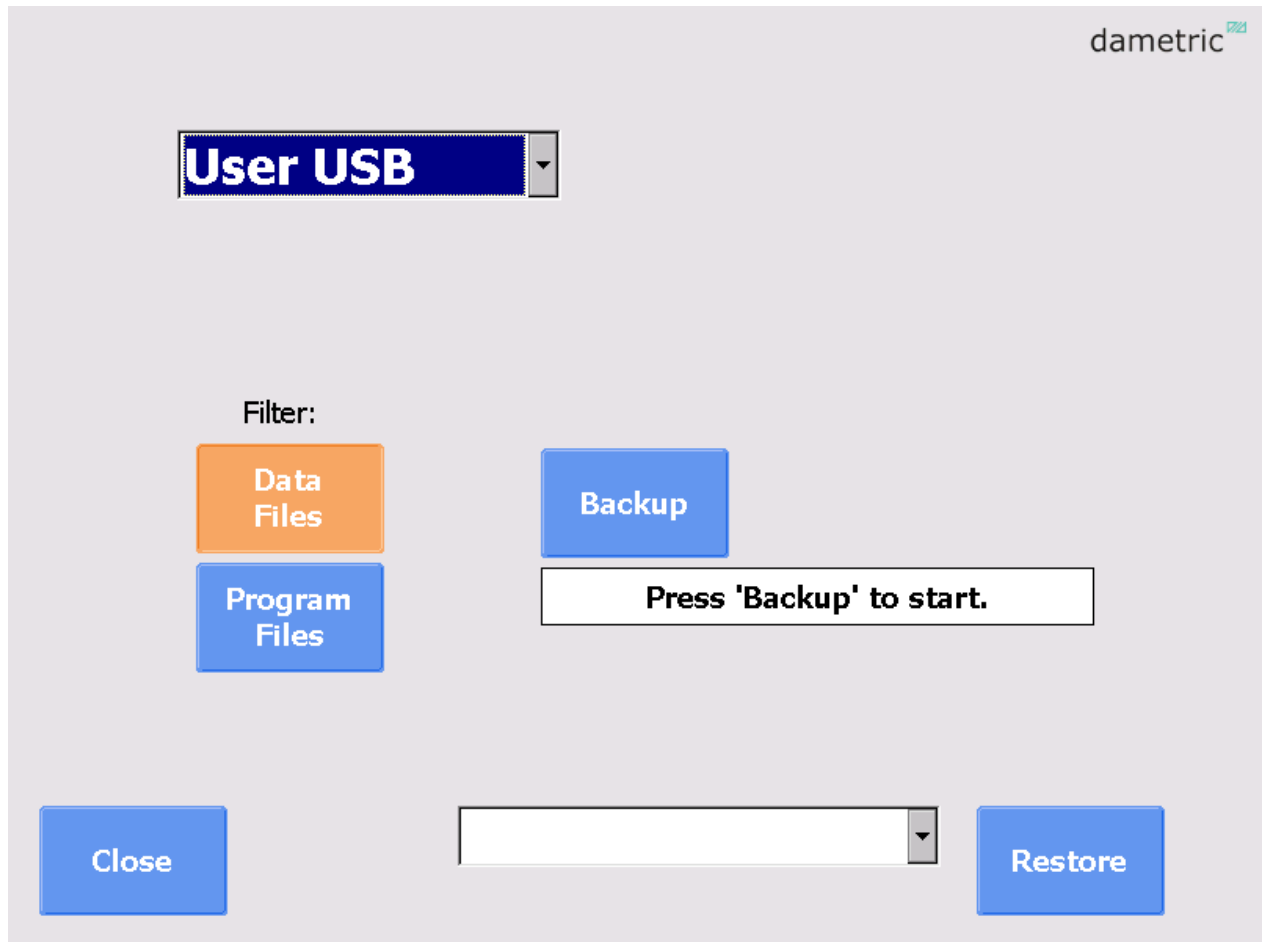




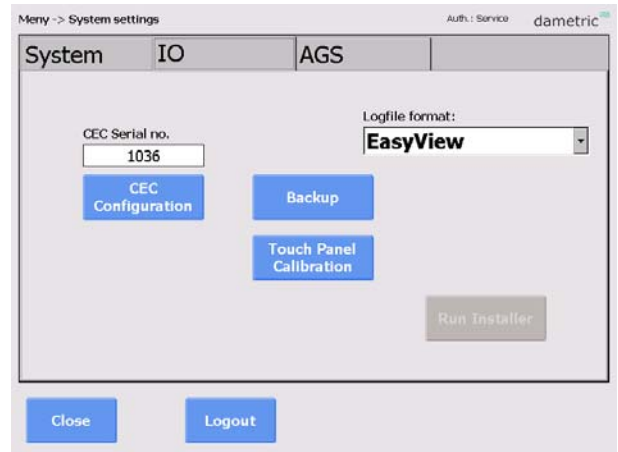
# GmsCE Backup



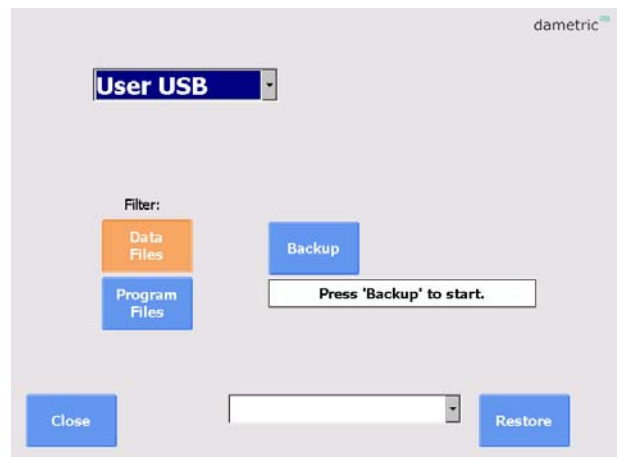
## Description of backup function

## 1 How to copy files to a user memory

- Insert a USB-stick into the available USB-port.
- Press the “Menu” button.
- Log in with the 2730 code.
- Activate “System Settings”.
- Select the “IO-tab”.
- Press the “Backup” button.



- Select the “User USB”.  
The System USB is always connected to the Panel-PC. The User USB is your memory you just plugged in.
- Deselect the “Program Files” button (it should be blue).
- Press the “Backup” button.
- Wait for the data files to be copied.
- Remove the USB-stick.



All log files, calibration files and database files is copied to the memory and to the directory:  
 <USB>\<Installation name\_refiner number>\<GMS\Backup\<DATE>\...  
 For example: F:\Hylte\_R11\GMS\Backup\20131001\_112257\...

## 2 Contact

Development, production and service:

**Dametric AB**

Jägerhorns Väg 19, SE-141 75 Kungens Kurva, Sweden

Phone: +46-8 556 477 00      Telefax: +46-8 556 477 29

E-mail: [dametric@dametric.se](mailto:dametric@dametric.se)      [www.dametric.se](http://www.dametric.se)

dametric 