

dametric 

AGS-XP-E250

AGS Sensor Tip

FOR THE AGS-SB170 SENSOR



DESCRIPTION

CONTENT

1	GENERAL.....	2
2	SPECIFICATION.....	2
3	ARTICLE NUMBER	2
4	SEALING	3
5	TIP REPLACEMENT.....	3
6	TIP-ID / LICENSE	3
7	WEAR LIMIT INDICATOR	3
8	OUTLINE DRAWING	3
9	CONTACT.....	3

1 GENERAL

The sensor tip part of the AGS sensor includes the actual gap measuring sensor.

The AGS-XP-E250 tip includes a sealing surface to minimize the risk of leakage into the AGS house. It is 250 mm (9.84 inch) long and will fit the AGS-SB170E sensor designed for the RTS SB-170 refiner.

2 SPECIFICATION

Measurement range	0 - 3.00 mm (0 – 0.12 inch). Segment material must be of a type with relatively good reluctance; maximum allowed magnetism is 20 Gauss in a position 10 mm (0.40 inch) above the segment surface.
Temperature range	Tip: 0-220 °C (428 °F) Connector: 0-120 °C (248 °F)
Wear limit	3 mm (0.12 inch)
Material	Stainless steel
Electrical isolation	Teflon cover
Connector	7-pole Stainless steel cover
Length	250 mm (9.84 inch)
Weight	0.70 kg (24.7 ounce)
Patents	The tip is protected by the patents: US 6.657.427, US 7.064.536, WO2004/085070, WO2005/083408 and WO/2006/135331.

3 ARTICLE NUMBER

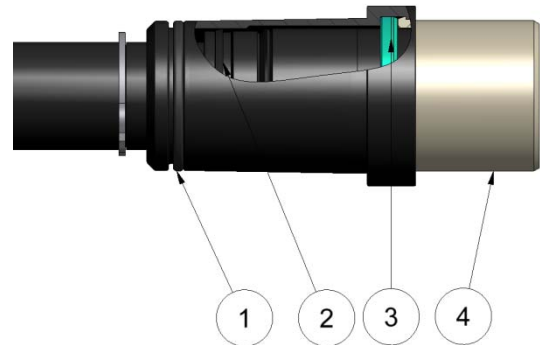
Dametric art.no.	AGS-XP-E250
SKC art.no.	SKC2594767
Valmet art.no.	VAL0400139

4 SEALING

This sensor tip includes several lubricated sealing gaskets (2) and (3) and these are protected with the sealing sleeve. The o-ring (1) is greased and protected with a plastic cover at delivery. Check the gasket when the cover is removed.

The side part of the sensor tip is covered by a Peek isolator (4).

Note! Inserting an old or damaged sensor tip may result in extensive damage to the AGS and/or compromised operation!



5 TIP REPLACEMENT

The tip is mounted directly to the AGS house after the holder is mounted.

The AGS sensor must be connected to the AGS measurement system when the tip is to be replaced and the procedure is controlled by the Panel-PC.

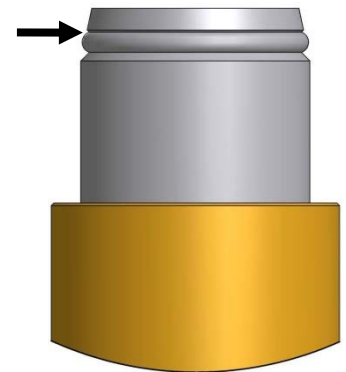
Check the manual “AGS-SB170E EN.pdf” how to perform a tip replacement.

6 TIP-ID / LICENSE

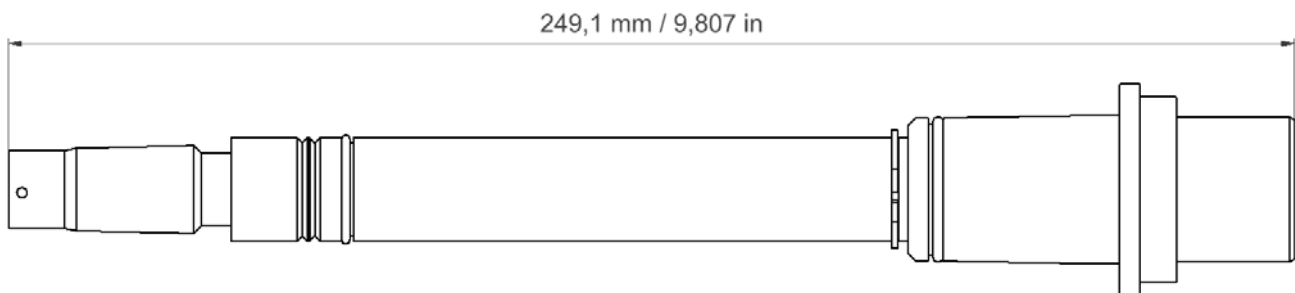
Consult the manual “AGS-XP TIP-ID-License EN.pdf” for details about tip id and license handling.

7 WEAR LIMIT INDICATOR

It is important that the sensor is not worn beyond the indicator, marked by the arrow. Note that this is after the estimated plate life. A sensor worn beyond this point may result in a plate crash and furthermore affect the refiner security.



8 OUTLINE DRAWING



9 CONTACT

Development, production and service:

Dametric AB

Jägerhorns Väg 19, SE-141 75 Kungens Kurva, Sweden

Phone: +46-8 556 477 00

E-mail: dametric@dametric.se www.dametric.se

dametric 